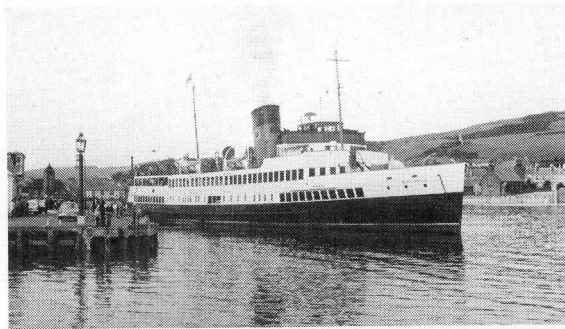


CRSC**CLYDE RIVER
STEAMER CLUB**

Special Excursion from Gourock, Wemyss Bay and Largs with connections from Dunoon, Rothesay and Millport to

**KILCREGGAN, TARBERT and
CAMPBELTOWN**

returning via

AILSA CRAIG

by Turbine Steamer

Queen Mary II

on

Saturday 7 September, 1974**ITINERARY**

GOUROCK dep. 0855	via Garroch Head		via Ailsa Craig
KILCREGGAN arr. 0905	TARBERT arr. 1210	LARGS arr. 1945	
... .. dep. 0925 dep. 1300	WEMYSS BAY arr. 2015	
WEMYSS BAY dep. 1000	CAMPBELTOWN arr. 1515	DUNOON arr. 2040	
LARGS dep. 1030 dep. 1600	GOUROCK arr. 2100	

CONNECTING SERVICES**BY RAIL:—****Outward —**

0800 Glasgow (Central) to Gourock
 0835 Glasgow (Central) to Largs
 0840 Glasgow (Central) to Wemyss Bay

Return (trains will not await arrival of steamer) —

1955 Largs to Glasgow (Central), arr. 2107
 2046 Wemyss Bay to Glasgow (Central), arr. 2140
 2105 Gourock to Glasgow (Central), arr. 2158

BY STEAMER (no extra charge):—**Outward —**

0800 Dunoon to Gourock
 0900 Rothesay to Wemyss Bay
 1000 Cumbrae Slip to Largs

Return —

2015 Largs to Cumbrae Slip
 2030 Wemyss Bay to Rothesay

BY FERRY:—**Outward —**

0815 Helensburgh to Gourock
 2115 Gourock to Helensburgh and Kilcreggan

LUNCHEON (95p) and HIGH TEA (85p) will be served at times detailed below. Children under 10 — 50p and 45p

TICKETS SHOULD BE OBTAINED IN ADVANCE

Bookings by post only from —

Mr. E. J. SCHOFIELD, 82 Bonnyton Drive, Eaglesham,
 Renfrewshire, G76 0LU.

FARE £2.50 ONLY

(£3 if booked on day of trip)
 (Children still at school — £1.25)

CLYDE RIVER STEAMER CLUB — Excursion to Tarbert and Campbeltown by T.S. QUEEN MARY II on Saturday, 7 September, 1974

To: — Mr E. J. Schofield, 82 Bonnyton Drive, Eaglesham,
 Renfrewshire, G76 0LU.

From: Name

Address

I wish to make the following bookings for the above excursion and enclose a remittance for £ . in favour of the "Clyde River Steamer Club."

BLOCK CAPITALS PLEASE